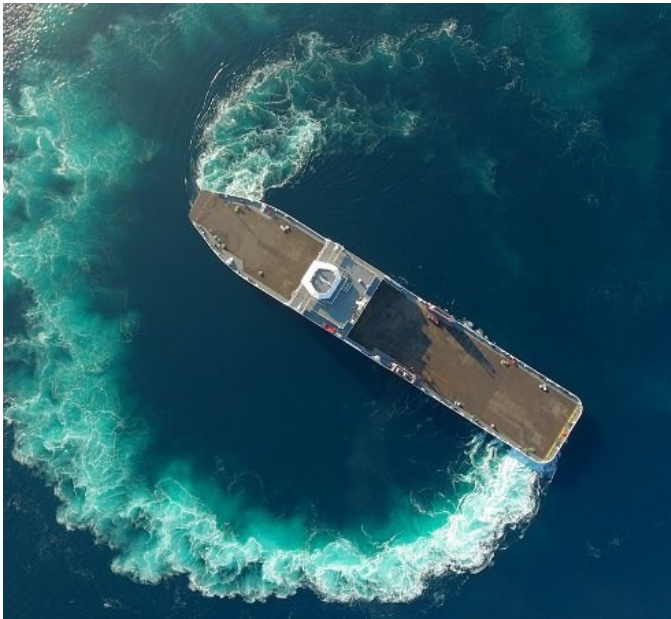




Photo Credit: Seaspan Ferries Corporation

VARD 6 515
Hybrid Dual Fuel Trailer Ferry



VARD™
a Fincantieri company

Vard Marine Inc.

Headquarters
Suite 230 2955 Virtual Way
Vancouver, BC V5M 4X6 Canada
Tel: +1 604 216 3310
info@vardmarineinc.com

Vancouver, CA
Ottawa, CA
Houston, US
Vũng Tàu, VN
Gdańsk, PL



- The VARD 6 515 trailer ferry is designed to carry 59 truck trailers. The innovative design combines dual fuelled propulsion, efficient hullform, and a battery back-up system to minimize operational costs and environmental impact. The hybrid propulsion system permits redundancy while operating at economical speed on a single engine. Vard Marine and the owner of the first two vessels, Seaspan ferries, collaborated extensively to analyze alternate configurations, study propulsion efficiency, and optimize lifecycle costs.

As with all Vard Marine designed ferries, the VARD 6 515 is configured for the loading, environmental conditions, terminals, local cost considerations for fuel and maintenance, and other operational requirements specific to this route. The design reflects Vard Marine’s combined strengths in feasibility assessments, advanced analysis, and ferry design.

PRINCIPAL PARTICULARS

Length overall	148.9 m
Beam	26.0 m
Depth	7.0 m
Draft	4.3 m
Complement	9 crew 1 spare 12 passengers

PERFORMANCE

Installed power	8,640 kW
-----------------------	----------

CLASS

BUREAU VERITAS I ✕HULL, ✕MACH, RO-RO CARGO SHIP - DUAL FUEL, COASTAL AREA - TEMPORARY UNRESTRICTED NAVIGATION (WITH CRITERIA), ✕AUT-UMS

CAPACITIES

LNG tank	200 m ³
Fuel Oil	136 m ³

PROPULSION MACHINERY

DF Main engines	2 x 4,320 kW
Emergency generators	1 x 125 kW
Bow thrusters	2 x 550 kW
Propulsion thrusters.....	2 x 2,200 kW
Battery system	1 x 410 kW

TRAILER SPECIFICATIONS

Trailer capacity	59 semis
Lane meters	1,034 LM

LIFESAVING EQUIPMENT

1 x 6 persons rescue boat
2 x 25 persons liferafts

VARD 6 515
Hybrid Dual Fuel Trailer Ferry